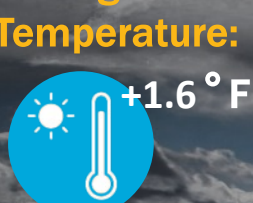


The Climate Change Road Ahead For La Crosse

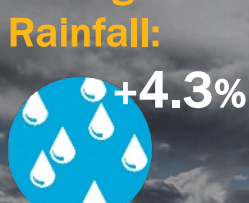
Looking Back...

Since 1980, La Crosse has experienced a change in:

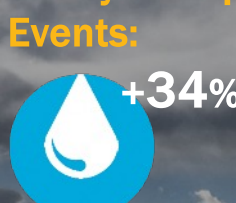
Average Annual Temperature:



Average Rainfall:



Heavy Precipitation Events:



Days Above 95 °F:



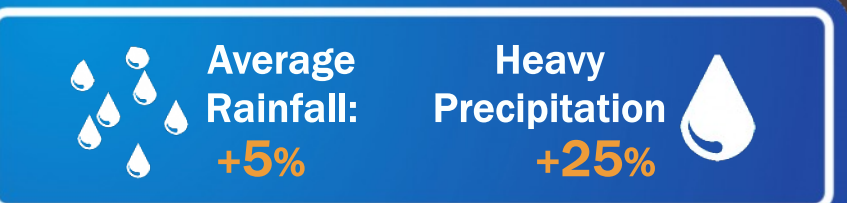
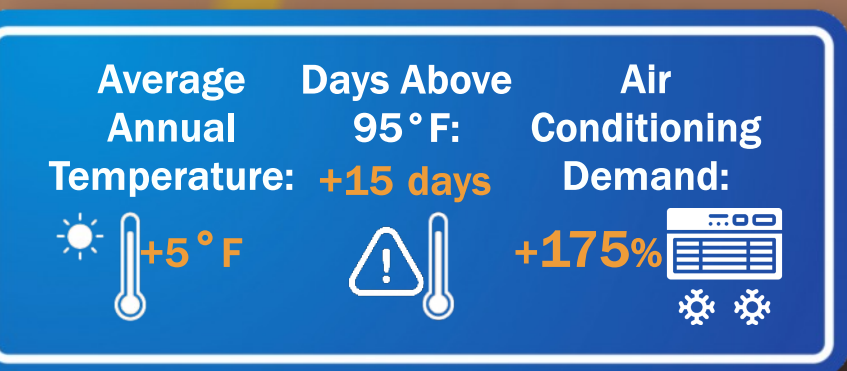
Growing Season:



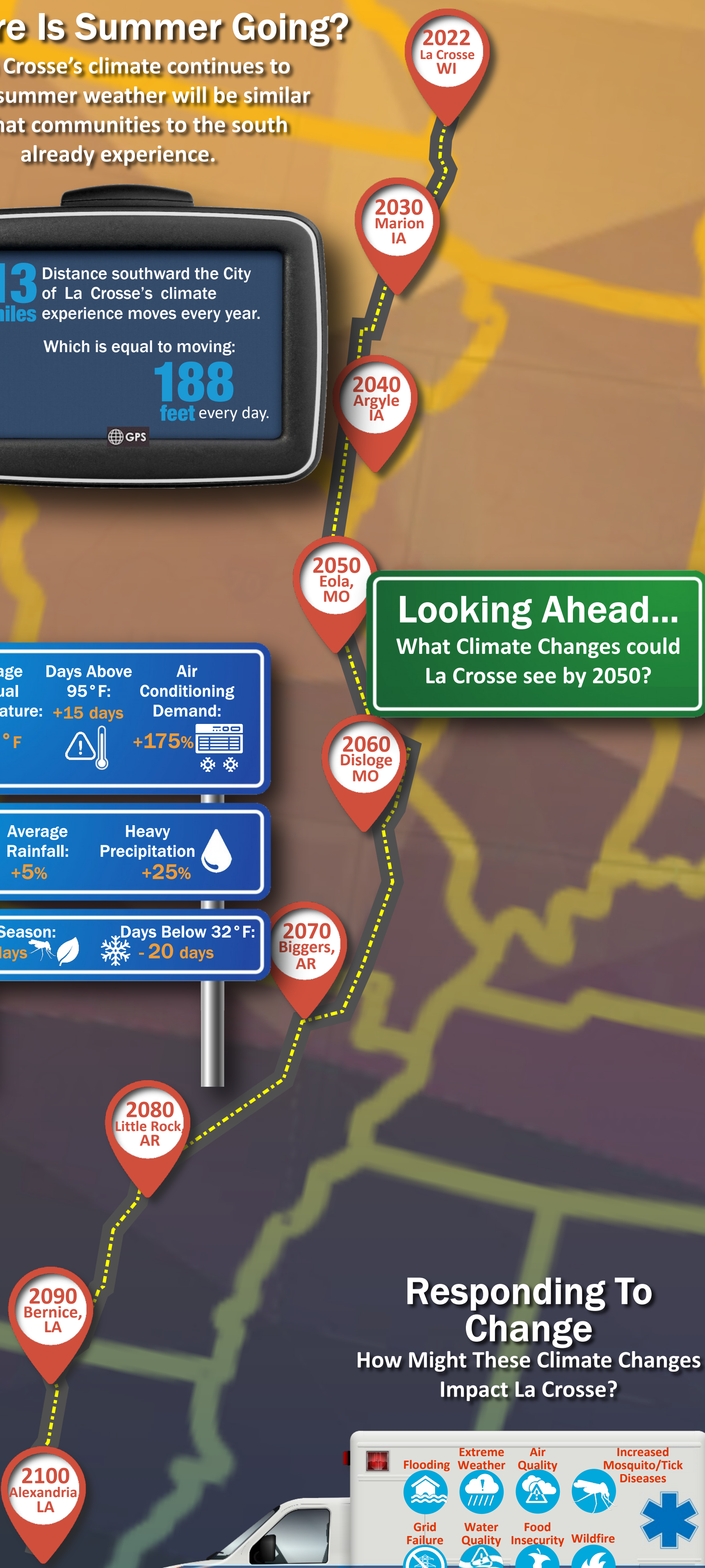
Days Below 32 °F:

Where Is Summer Going?

As La Crosse's climate continues to warm, summer weather will be similar to what communities to the south already experience.



Looking Ahead... What Climate Changes could La Crosse see by 2050?



Responding To Change How Might These Climate Changes Impact La Crosse?



Who is Most Vulnerable?

Across the United States, people and communities differ in their exposures, their inherent sensitivity, and their capacity to respond to and cope with climate change related threats. Community members who are most vulnerable include:

- Children
- Older Adults
- Individuals with Disabilities
- Those in Economic Stress
- People of Color
- At Risk Workers
- Food Insecure Individuals
- Individuals w/out Vehicle Access

Learn More: <https://cutt.ly/yPCZmqn>